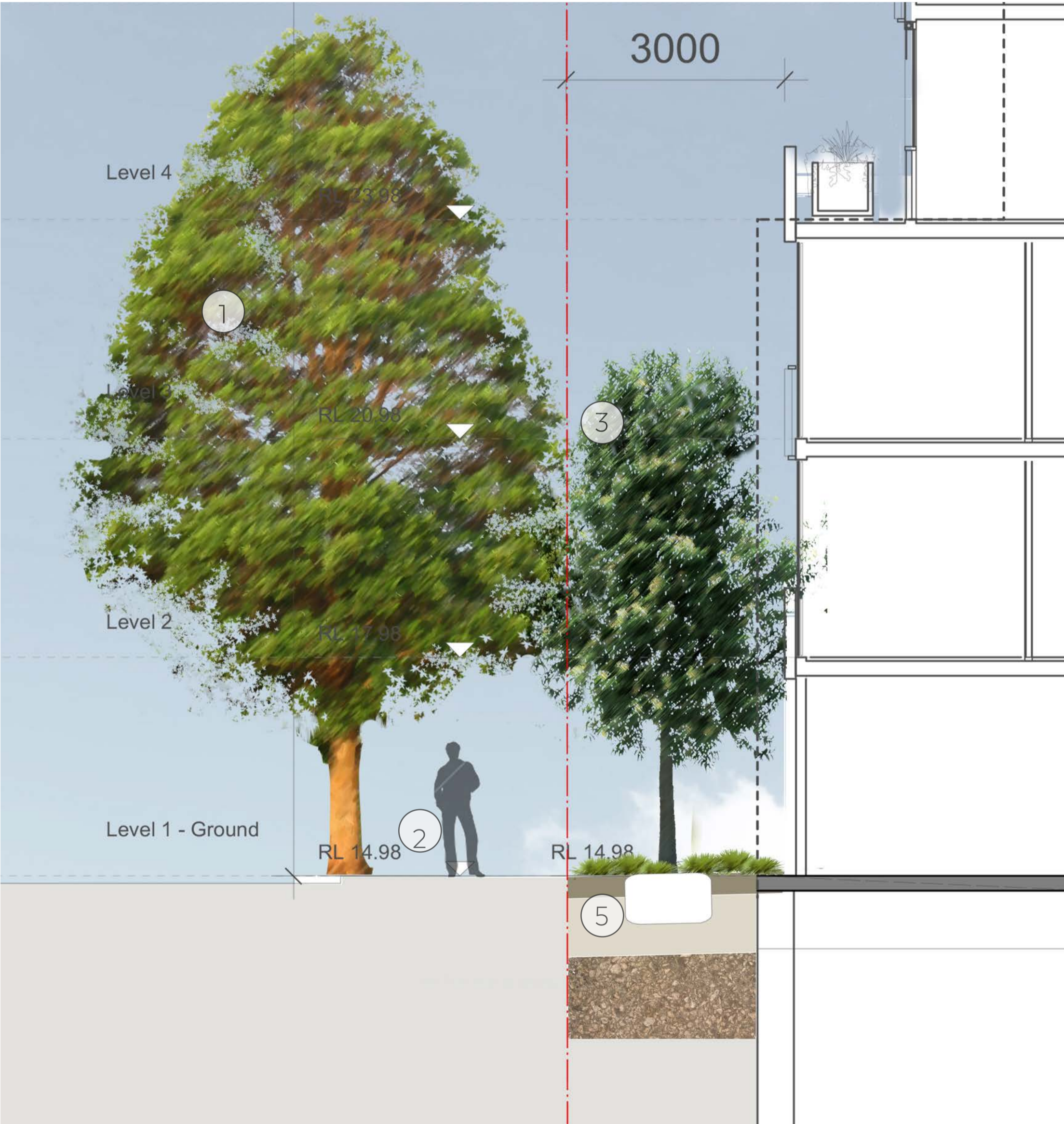




1. New street tree planting of *Lophostemon confertus* (to be advised by Council pending further input) and per Council Streetscape style guide. Figs in pots removed. Tree planting subject to space with under-grounding of power lines.
2. Repaving of footpath as negotiated with Council with street furniture salvaged and reinstated.
3. Small/ Medium and columnar sized evergreen trees in landscape zone. Trees to be hardy rainforest species such as Lemon Myrtle (*Backhousia citrifolia*) or Firewheel (*Stenocarpus sinuatus*).
4. Wide porous paving entrances (concrete to retail for functionality and usability. Paving over structural soil cells to allow water and air to get through to soil medium below (gaseous exchange).
5. Soil volume for trees potentially up to 250 cubic metres in setback zone.
6. Planters in soho terraces setdown and flush with floor level. Soil volume allows growth of vines for greening of facade. Planters with hedging plants for privacy from street.
7. Planters with vines to provide urban greenery to King Lane. these will be maintained by body corporate.



Brushbox suggested for street trees on Princes Highway

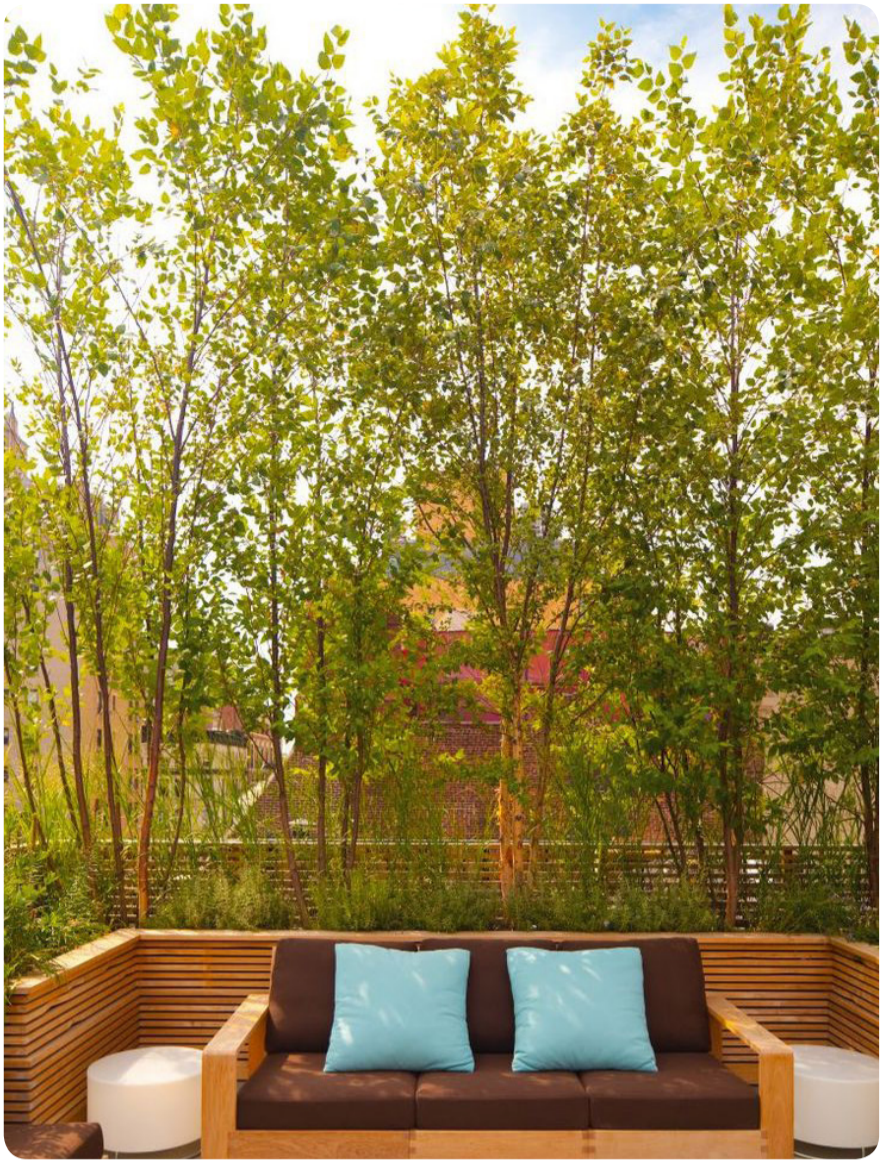


Section 01 | Princes Highway Streetscape Section- Scale 1:100

Facade and Level 4 Terraces

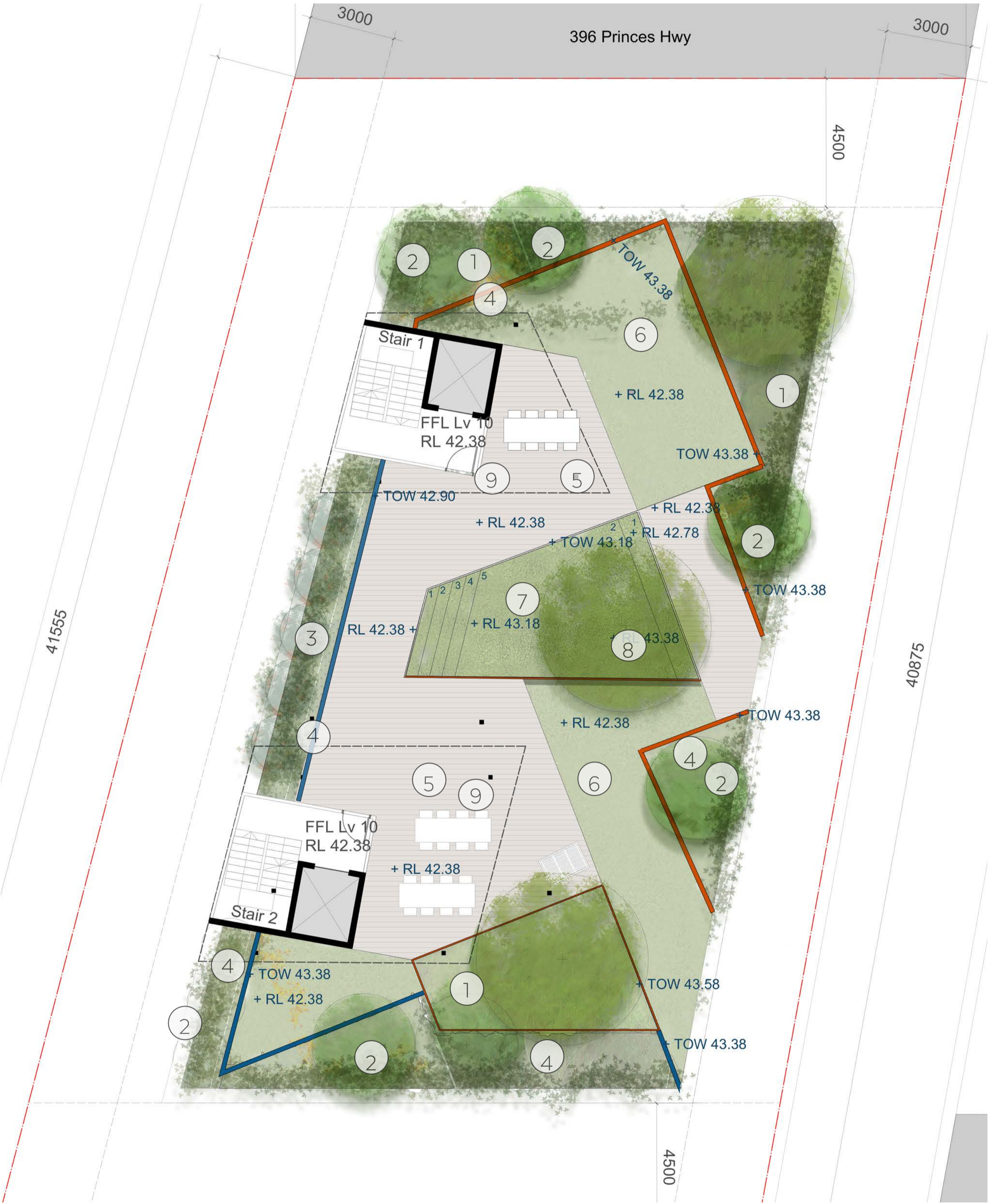


Private terraces with generous planting and useable terrace spaces.



High quality finishes for level 4 Terraces.

1. Planters along level 4 facades located with a setback from building facade as discussed with Council. Planters to be maintained by specialist contractors, with rope access from rooftop level. Planters within strata title and are to be managed by body corporate to ensure maintenance to a high standard. Refer to landscape report for further information.



Movable lounges and furniture within shaded areas.



Extensive massed planted areas for a garden character.



Small feature trees such as NZ Christmas Bush.



Simple fixed furniture.

1. Massed planting in planters of 1m depth to allow generous planting including trees. Planters to act as balustrade. Design may allow for modulation with part planter/part balustrade, to be discussed further with architect.
2. Exposure resistant trees such as *Acmena smithii* and *A. hemilampra* to provide shade. Soil volumes adequate for sustained growth and for trees to reach maximum potential.
3. Smaller evergreen trees- *Metrosideros excelsa* (NZ Christmas Tree) to provide wind break and privacy overlooking separation to adjacent developments.
4. Lower planters (nom 800mm) with balustrade detail above as compliant barrier.
5. Two separate sheltered spaces for gatherings, with fixed tables, potential for BBQ and with a high quality paving finish to match architectural finishes.
6. High quality artificial turf (such as Tiger Turf) to reinforce green character of rooftop garden on limited set down area and ease of maintenance.
7. Turf (real) platform for sunning and lounging using native Nyara low mow *Zoysia* grass.
8. Specimen deciduous tree such as *Brachychiton* (Illawarra Flame Tree) or exotic species for character and year-round interest.
9. Shade structure over gathering spaces to be designed in collaboration with architects.

Indicative Planting Palette

Street Tree Options



Small Trees- Rooftop



Screening Shrubs Rooftop



Green Facade Planting - Cascading Plants



Communal Green Roof



PROPOSED PLANT SCHEDULE - PRINCES HIGHWAY ROCKDALE				
Code	Species	Common Name	Spacing	Pot Size
STREET TREES				
LC	<i>Lophostemon confertus</i>	Brushbox	as shown	200L
SETBACK TREES				
BC	<i>Stenocarpus sinuatus</i>	Firewheel	as shown	400L
ROOFTOP TREES				
AS	<i>Acmena smithii</i> <i>Sublime</i>	Lily Pili	as shown	400L
GF	<i>Glochidion ferdinandii</i>	Cheese Tree	as shown	400L
Shrub, Perennial and Groundcover				
	<i>Acacia cognata</i> 'Bronze Cascade'	Dwarf Wattle Cultivar	500mm ctrs	25L
	<i>Banksia</i> 'Giant Candles'	Giant Candles	as shown	25L
	<i>Banksia marginata</i>	Silver Banksia	as shown	25L
	<i>Baura rubioides</i>	Native Dog Rose	400mm ctrs	150mm
	<i>Carpobrotus glaucescens</i>	Native Pig Face	400mm ctrs	150mm
	<i>Ceratopetalum gummiiferum</i>	NSW Christmas Bush	as shown	25L
	<i>Cordyline petiolaris</i>	Broad Leaf palm Lily	as shown	25L
	<i>Crassula ovata</i>	Jade Plant	400mm	200mm
	<i>Dicandra repens</i>	Kidney Weed	Random	100mm
	<i>Dietes robinsoniana</i>	Wedding Lily	500mm	200mm
	<i>Echeveria agavoides</i>	Echeveria	200mm	150mm
	<i>Hymenosporum flavum</i> 'Luscious'	Dwarf Native Frangipani	750mm	25L
	<i>Liriope muscari</i>	Liriope	400mm	200mm
	<i>Myoporum parvifolium</i>	Creeping Boobiala	500mm ctrs	150mm
	<i>Ophiopogon japonicus</i> 'Nana'	Dwarf Mondo Grass	random	tube stock
	<i>Ophiopogon japonicus</i> 'Nana'	Dwarf Mondo Grass	random	tube stock
	<i>Protea nerifolia</i> x <i>susannae</i>	Protea Pink Ice	25L	As shown
	<i>Sarservieria trifasciata</i> 'Laurentii'	Variegated Snake Plant	as shown	200mm
	<i>Senecio serpens</i>	Blue Chalksticks	200mm	150mm
	<i>Viburnum odoratissimum</i>	Sweet Viburnum	500mm	25L
	<i>Viburnum odoratissimum</i> 'Emerald Lustre'	Viburnum cultivar	500mm	300mm
	<i>Viola hederacea</i>	Native Violet	random	100mm
	<i>Zoysia tenuifolia</i>	Temple Grass	200mm	tube stock
Façade Greening- Vines and Cascading Plants				
VINES				
	<i>Aphanopetalum resinosum</i>	Water Vine	500mm ctrs	25L
	<i>Billadiera heterophylla</i>	Bluebell Creeper	500mm ctrs	25L
	<i>Eustrepus latifolius</i>	Wombat Berry	500mm ctrs	25L
	<i>Mandevillea laxa</i>	Chilean Jasmine	500mm ctrs	25L
	<i>Pandorea pandorana</i>	Wonga Wonga Vine	500mm ctrs	25L
CASCADING PLANTS				
	<i>Camellia sasanqua</i> 'Snow'	Grouncover Camellia	400mm	200mm
	<i>Carpobrotus Aussie Rambler</i>	Pigface	400mm	200mm
	<i>Casuarina</i> 'Cousin It'	Prostrate Casuarina	400mm	200mm
	<i>Casuarina glauca</i> 'Freefall'	Prostrate Casuarina	400mm	200mm
	<i>Cerastium tomentosum</i>	Snow in Summer	400mm	200mm
	<i>Cerastium tomentosum</i>	Snow in Summer	400mm	200mm
	<i>Convolvulus sabatius</i> susp <i>mauritanicus</i>	Ground Morning Glory	400mm	200mm
	<i>Cuphea ignea</i>	Cigar plant	400mm	200mm
	<i>Evolvulus glomeratus</i> 'Blue Daze'	Hawaiian Blue Eyes	400mm	200mm
	<i>Juniperus conferta</i> 'Blue Pacific'	Shore Juniper	400mm	200mm
	<i>Lampranthus spectabilis</i>	Iceplant	400mm	200mm
	<i>Leptospermum laevigatum</i> 'Foreshore'	Coastal Tea tree	400mm	200mm
	<i>Rosmarinus</i> 'Blue Lagoon'	Blue Lagoon' Rosmary	400mm	200mm
	<i>Russelia equisetiformis</i>	Firecracker plant	400mm	200mm
	<i>Senecio mandraliscae</i>	Blue Chalksticks	400mm	200mm
	<i>Westringia fruticosa</i> 'Flat and Fruity'	Prostrate Coast Rosemary	400mm	200mm
	<i>Zieria prostrata</i> 'Carpet Star'	Headland Ziera	400mm	200mm

